




EASY.
EFFICIENT.
RELIABLE.

ELite 580

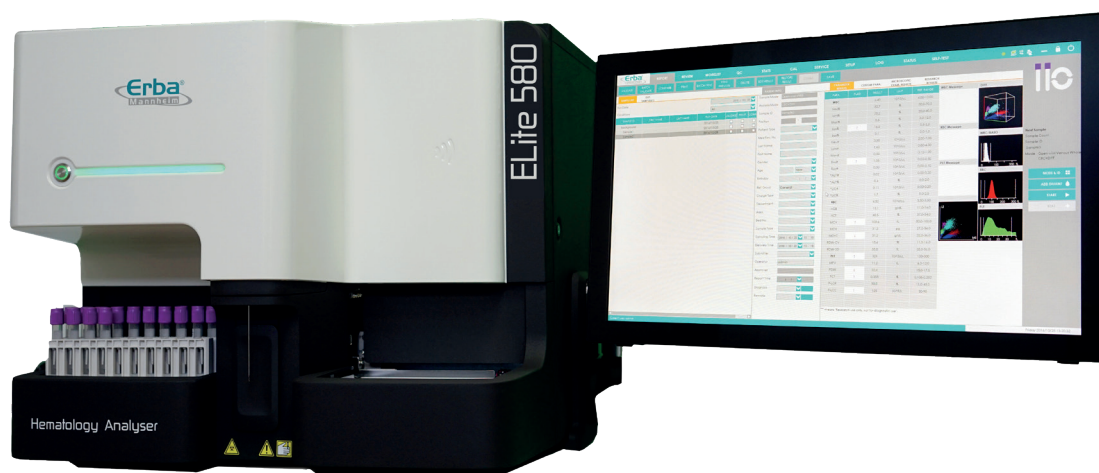
FULLY AUTOMATED
HEMATOLOGY ANALYSER



Fully automated five part differential – report faster with more confidence.

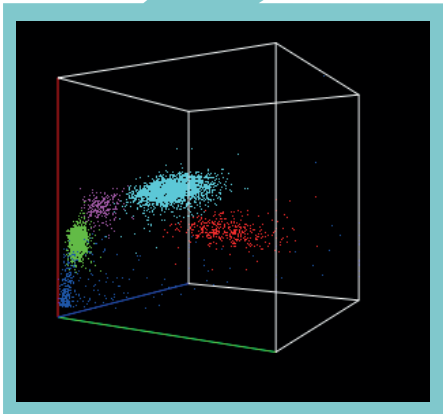
Effective laboratory solutions enhance workflow by allowing users to focus on the clinical aspects of testing.

The ELite 580's combination of high capacity autosampler and five part differential allows users to focus on tasks that more directly help improve patient outcomes.



ELite 580 is ahead of the rest with class leading design and technologies.

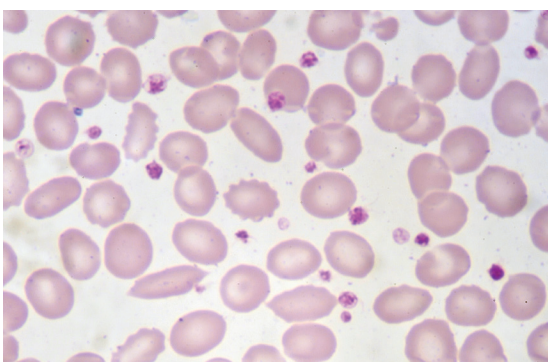
High definition for users ...



... and results

The Elite 580 features a 22 inch full HD display.

The full panel of results including 3D WBC differential scatterplots can be reviewed from a single screen.



Detailed platelet information

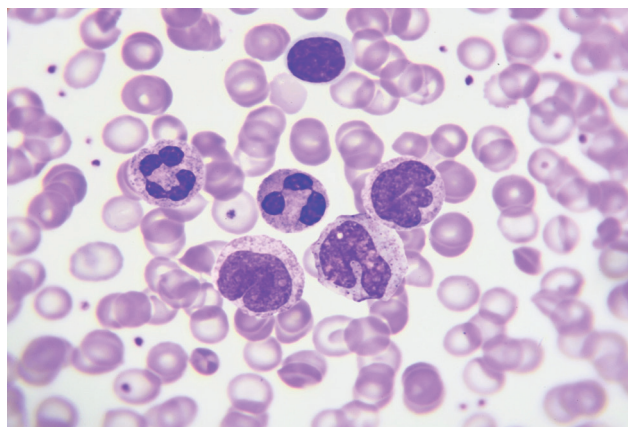
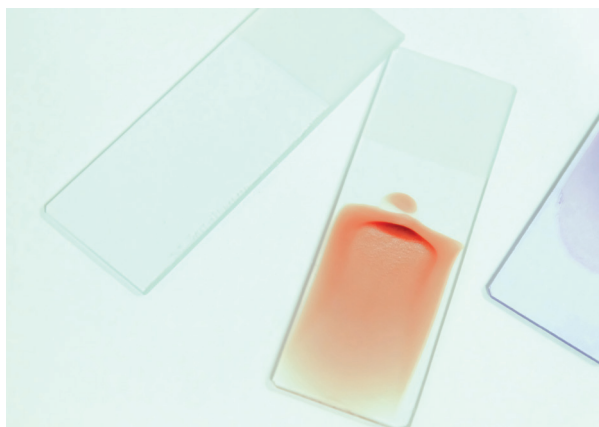
The Elite 580's PLCR and PLCC parameters allow users to report detailed information about the patient's platelet status.



Manual blood film review should focus on morphology, not counting.

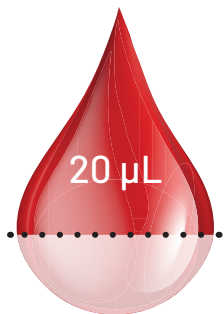
Blood film review is a complex process and takes time to master. Adding a five part differential system to the laboratory means that valuable time at the microscope can be spent assessing morphology and other abnormalities rather than counting.

The Elite 580 goes well beyond the normal 5 part differential with added information from the advanced research parameters - ALY%, LIC%, ALY#, LIC#.





When less is better. Much better.
ELite 580 uses less than a drop of blood.



Just 20µL of Aspiration volume

The efficient fluidics design allows the ELite 580 to aspirate only 20 µL. This combined with the open tube sampling aspiration means a couple of drops is more than enough.

Reduce pre-analytical variables with ADDM

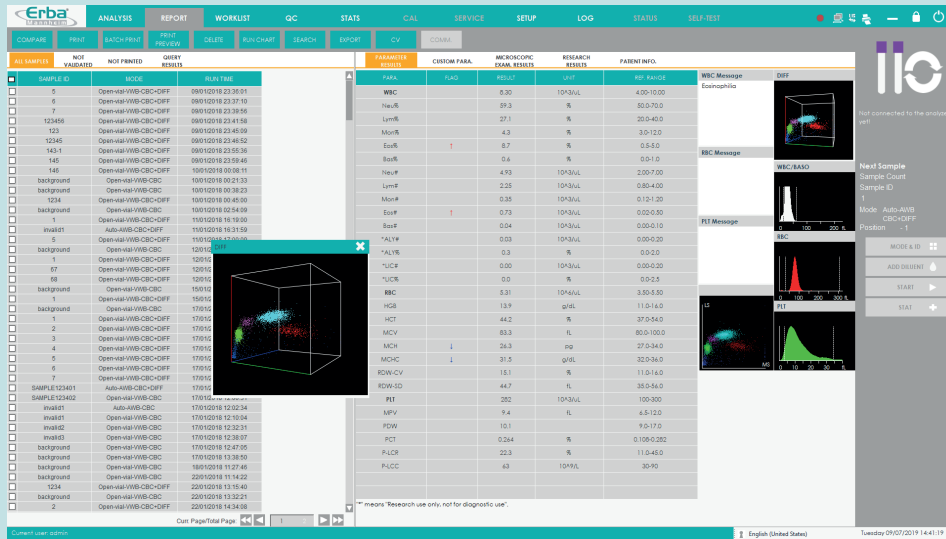
To ensure consistent and exact dilution of the patient sample, an automated diluent dispense mode (ADDM) has been created to help reduce errors.



Wide range of tubes

ELite 580 is able to accept sample tubes from many different manufacturers including pediatric samples.

EASY USER INTERFACE

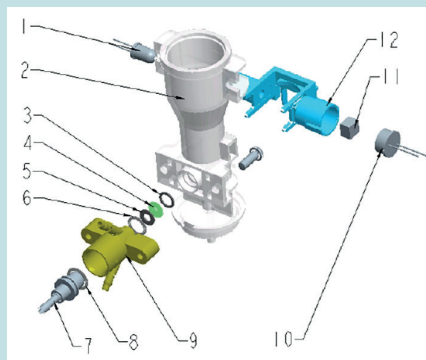


REAGENT REGISTRATION

- Full traceability via RFID inventory management system



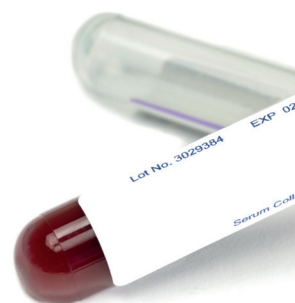
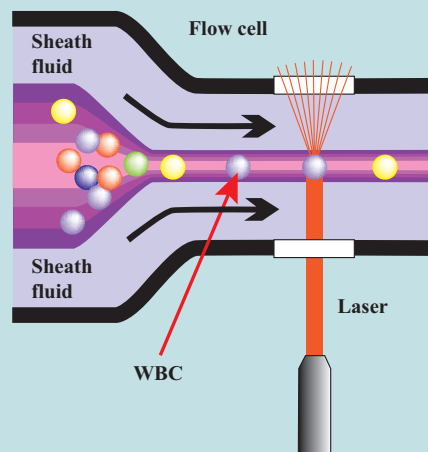
RELIABLE ENGINEERED CONSTRUCTION



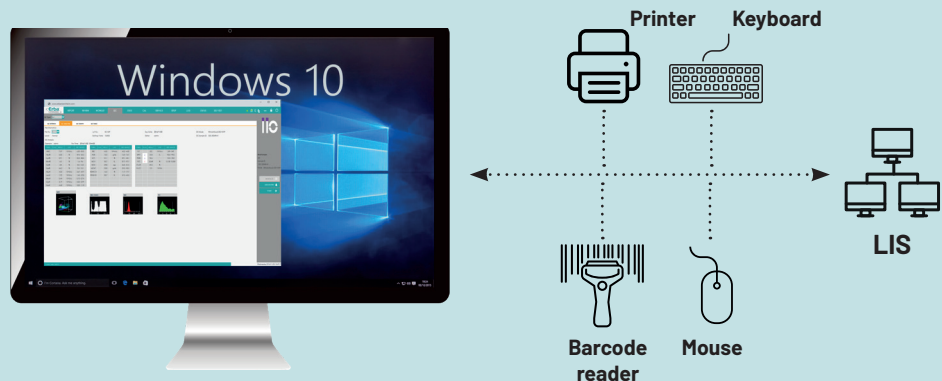
- Small footprint - 620 x 620 mm
- Status indicator
- Simple, well engineered construction
- High quality components for long life

DESIGN

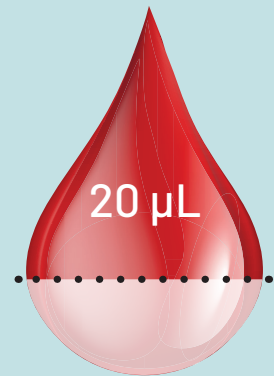
- 3 Angle flow cytometry for high quality WBC differential results



EFFICIENT EXTERNAL CONNECTIONS



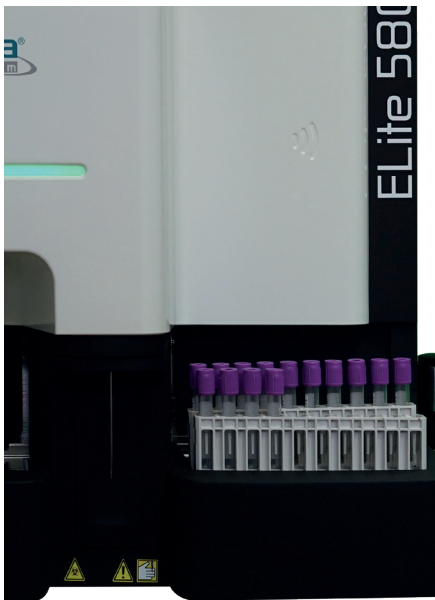
ANALYTICS



- Low aspiration volume 20 µL
- 29 parameters
- Guaranteed dilution accuracy via automatic diluent dispensing
- Advanced platelet analysis (P-LCR, P-LCC, PDW-SD, PDW-CV)
- Automatic floating discriminations

DESIGN

- 60 Tubes;
Continuous loading
with auto-mixing



TECHNICAL SPECIFICATIONS

PRINCIPLES

Impedance method for WBC, RBC, PLT counting
Cyanide-free reagent for Hemoglobin test
Flow Cytometry (FCM), Semi-conductor Laser scatter
chemical dye method, independent Basophil channel

PARAMETERS

WBC, LYM, LYM%, MON, MON%, NEU, NEU%, EOS, EOS%,
BAS, BAS%, RBC, HGB, HCT, MCV, MCH, MCHC, RDW-CV,
RDW-SD, PLT, PDW, MPV, PCT, P-LCR, P-LCC; 4 research
parameters:ALY, ALY%, LIC, LIC%, 1x 3D scattergram,
3x 2D scattergram and 3 histograms

THROUGHPUT

Up to 80 samples per hour

TEST MODE

CBC
CBC+DIFF

PERFORMANCE

Carryover	Repeatability	Linearity
WB ≤ 0.5%	≤ 2.0% (4.0 – 15.0 x10 ⁹ /L)	0.00 – 300 x10 ⁹ /L
RBC ≤ 0.5%	≤ 1.5% (3.50 – 6.00 x10 ¹² /L)	0.00 – 8.50 x10 ¹² /L
HGB ≤ 0.5%	≤ 1.5% (110 – 180 g/L)	0 – 250 g/L
PLT ≤ 1.0%	≤ 4.0% (150 – 500 x10 ⁹ /L)	0 – 3000 x10 ⁹ /L Whole

DATA STORAGE CAPACITY

Up to 100.000 results including numeric
and graphical information

COMMUNICATION

LAN port supports HL7 protocol

OPERATING ENVIRONMENT

Temperature: 15-30°C
Humidity: 30-85%
Air Pressure: 70~106 kPa

POWER REQUIREMENT

A.C.100-240V;
≤300VA;
50/60 Hz

DIMENSION AND WEIGHT

620 mm (L)
620 mm (W)
535 mm (H)

WEIGHT

56 kg



Erba Lachema s.r.o.

Karásek 2219/1d, 621 00 Brno, Czech Republic
Phone: +420 517 077 111
E-mail: sales@erbamannheim.com
www.erbamannheim.com

TOTAL SOLUTIONS FOR CLINICAL DIAGNOSTICS

Version No 1.1