

# DH76 Auto Hematology Analyzer

Precise

Stable

Efficient



# DH76

## Auto Hematology Analyzer

- 29 parameters
- 3D scattergram
- Wide linearity
- 80 samples per hour
- Only 20  $\mu$ L sampling volume for 5-part differentiation

### Product Specifications

|   |   |
|---|---|
| <ul style="list-style-type: none"> <li>• <b>Detection principle:</b><br/>3-angle semiconductor laser scatter, flow cytometry (WBC Diff)<br/>Impedance method (WBC/RBC/PLT)<br/>Cyanide free (HGB)</li> </ul>  | <ul style="list-style-type: none"> <li>• <b>Test modes:</b><br/>CBC and CBC+Diff</li> </ul>   |
| <ul style="list-style-type: none"> <li>• <b>Parameters:</b><br/>29 parameters are provided, including 25 report parameters (WBC, LYM%, LYM#, NEU%, NEU#, MON%, MON#, EOS%, EOS#, BAS%, BAS#, RBC, HGB, HCT, MCV, MCH, MCHC, RDW-CV, RDW-SD, PLT, PDW, MPV, PCT, P-LCR, and P-LCC) and 4 research parameters (ALY#, ALY%, LIC#, LIC%). One 3D scattergram, three 2D scattergrams, three histograms.</li> </ul> | <ul style="list-style-type: none"> <li>• <b>Counting modes:</b><br/>Venous blood, capillary blood and pre-diluted</li> </ul>  |
| <ul style="list-style-type: none"> <li>• <b>Throughput:</b><br/>80 samples per hour<br/>Up to 90 samples per hour in CBC mode</li> </ul>  | <ul style="list-style-type: none"> <li>• <b>Sample volume:</b><br/><math>\leq 20\mu</math>L</li> </ul>  |
| <ul style="list-style-type: none"> <li>• <b>Data storage:</b><br/>Up to 100,000 results</li> </ul>  | <ul style="list-style-type: none"> <li>• <b>Power requirement:</b><br/>100V-240V~, <math>\leq 250</math> VA, 50/60 Hz</li> </ul>  |
| <ul style="list-style-type: none"> <li>• <b>Reagent:</b><br/>DIL-A diluent, LYA-1 LYSE, LYA-2 LYSE, LYA-3 LYSE, CLE-P</li> </ul>  | <ul style="list-style-type: none"> <li>• <b>Net weight:</b><br/>56kg</li> </ul>   |
|   | <ul style="list-style-type: none"> <li>• <b>Dimension:</b><br/>650mm(L)<math>\times</math>610mm(W)<math>\times</math>550mm(H)</li> </ul>  |
|   | <ul style="list-style-type: none"> <li>• <b>Linearity range:</b><br/>WBC (0.00-300.00) <math>\times 10^9/L</math>      RBC (0.00-8.50) <math>\times 10^{12}/L</math><br/>HGB (0-250) g/L                      PLT (0-3000) <math>\times 10^9/L</math><br/>HCT 0.0-67.0%</li> </ul>          |
|   | <ul style="list-style-type: none"> <li>• <b>Repeatability:</b><br/>WBC <math>\leq 2.0\%</math>                              RBC <math>\leq 1.5\%</math><br/>HGB <math>\leq 1.5\%</math>                              PLT <math>\leq 4.0\%</math><br/>MCV <math>\leq 1.0\%</math></li> </ul> |



**SHENZHEN DYMIND BIOTECHNOLOGY CO., LTD.**

Address: 2/F, Nanfeng Building B, Nanshan Yungu Innovation Industrial Park, No.1183, Liuxian Blvd, Taoyuan Street, Nanshan District, Shenzhen 518055, P.R.China

Tel: +86-755-26008015

Fax: +86-755-26008015

E-mail: [inf1@dymind.com.cn](mailto:inf1@dymind.com.cn)

Website: [www.dymind.com.cn](http://www.dymind.com.cn)

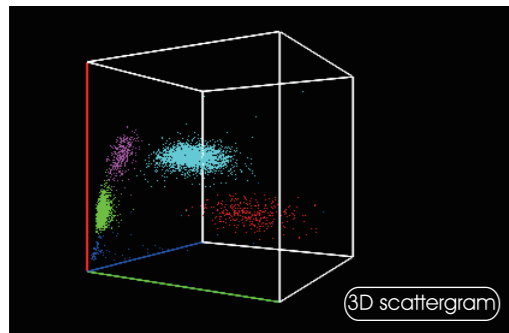
P/N: EN-DH76[1.0]

[www.dymind.com.cn](http://www.dymind.com.cn)

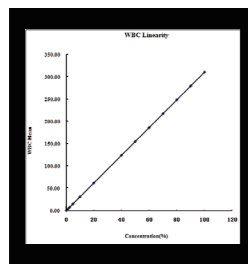
**Declaration:** Shenzhen Dymind Biotechnology Co., Ltd reserves the right to change the product of specifications and appearance at any time. For the information of this manual, Shenzhen Dymind Biotechnology Co., Ltd reserves the right to the interpretation and the decision.

# DH76

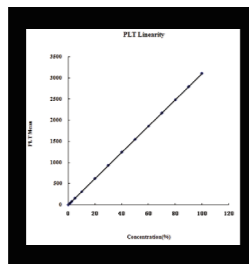
## Auto Hematology Analyzer



3D scattergram for accurate differentiation and pathological sample flag.



Linearity for WBC:  
0.00–300 × 10<sup>9</sup>/L

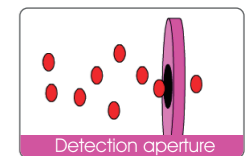
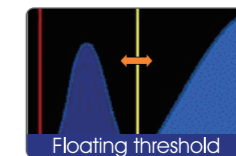


Linearity for PLT:  
0–3,000 × 10<sup>9</sup>/L



### + Fully Automatic Intelligent Technology

- Visual self-tests (working status self-test and reagent volume self-detection)
- Automatic test re-run, with re-run rules inside
- One-button error removal and automatic standby mode function
- Intelligent WBC/RBC/PLT floating threshold technology



### + Excellent Data Management System

- A wide range of pathological alarms and up to 20 user-defined alarm ranges
- Customized templates print and help to customize the final report according to requirements
- Bi-directional LIS connection
- QC and calibration management



20μL ultra-low sample volume especially suited to pediatric and geriatric samples



Loading up to 60 samples simultaneously and support continuous sample loading



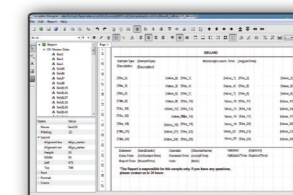
Multiple counting modes: capillary blood, venous blood, and pre-diluted



Closed and open vial modes, STAT function available



80 samples per hour Auto sample mixing



Customized print templates



Internal Barcode scanning