

**CAT NUMBER: 9033001121**

# D3024

## High Speed Micro Centrifuge



## Features

- Patent special double cooling air design ensures fast cooling of the rotor and low energy consumption
- 3-layer sealed rotors ensure safe centrifugation
- Brushless motor drive, maintenance free
- Safety features include door interlock; excessive speed and temperature detection; automatic self-diagnostics
- Outstanding aluminum alloy rotors fully autoclavable at 121°C temperature and high pressure disinfection
- Five rotors are optional complete with 24 places 1.5/2.0mL tubes, 5.0mL, 0.2mL and 0.5mL tubes with adapters

## Applications

Suitable for numerous biological, chemistry, clinical and research applications including molecular biology, clinical chemistry labs, wide variety of microbiology applications, such as DNA, RNA or protein isolation and many more.

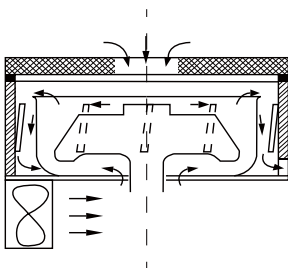


Brushless DC motor



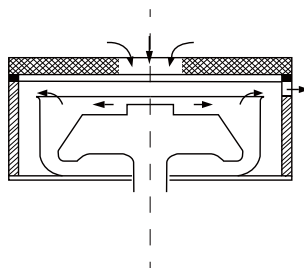
Wide range of rotors

### Effective Ventilation System



Proprietary design of dual path ventilation enforcing air cooling from both the upper and lower side for the rotor.

### Conventional design



Limited ventilation on the upper side of the rotor

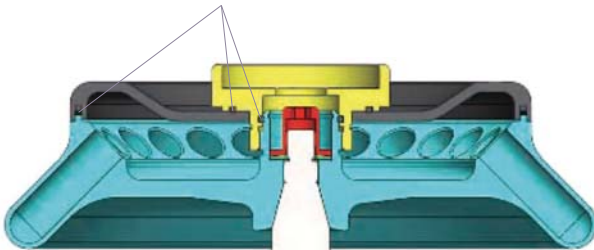


DLAB rotors are manufactured from military-industrial grade aluminum alloy with high mechanical strength for precise running and safety (excludes D2012 plus rotor)

- Every rotor can reach a maximum Speed of 15000rpm
- Rotors are seated on a tapered shaft, concentric and self-aligning, perfect to achieve running stability at high speeds
- D3024 & D1524R with three-layer sealed rotors/ anti-sample overflow prevents accidental leakage
- D3024 & D3024R rotors have passed MCA test according to IEC/EN61010-2-20, including mechanical safety and bio-safety tests
- Powerful cooling system minimizes rotor heating. D3024 rotors maintain at 10°C and D2012 rotors less than 8°C after running an hour

## Seals within the aluminum alloy rotor

Three rubber seals fitted to achieve bio-safe condition



## Rotor Features

### Fully autoclavable

High strength aluminum alloy rotors are fully autoclavable, withstanding steam sterilizing at 121°C for 20 minutes

### Three-layer seal

D3024 & D1524R rotors are designed to prevent sample leakage. Each and every rotor is hermetically sealed by three rubber seals.

### Mechanical safety

DLAB centrifuges confirm to MCA standard IEC/EN61010-2-20, causing disruption by partially cutting and overloading rotor assembly, and guarantees that no part shall be detached to cause danger to person or the environment.

Specifications	D3024
Max. Speed	15000rpm(200-15000rpm), increment:10rpm
Max. RCF	21380 × g, increment:10 × g
Speed Accuracy	± 20 rpm
Rotor Capacity	5mL × 18, 5mL culture tubex12 0.2mL/0.5mL/1.5mL/ 2mL × 24, 0.5mL × 36,PCR8 × 4
Run Time	30sec-99min/Continuous
Acceleration/Braking time [Sec]	25s ↑ 25s ↓
Motor	Brushless DC motor
Safety Devices	Dual door interlock, Over-speed detection, Automatic internal diagnosis
Power	Single-phase, AC200V-400V, 50Hz/60Hz, 5A,AC100V-120V, 50Hz/60Hz, 8A 200W
Noise Level	≦ 64dB
Dimension[W × D × H]	280 × 364 × 266mm
Weight	12kg
Certification	CE cTUVus FCC MCA
Other functions	Speed/RCF switch; Short-time run function; sound-alert function

## Available rotors

### AS24-2

Cat. No.19400069

#### for D3024 & D1524R

Max. speed: 15000rpm

Max. RCF: 21380 × g

Rotor capacity:

2mL/1.5mL × 24/0.2mL × 24/0.5mL × 24

Rotor material: Aluminum alloy

Bio-safe(Bio sealing): Yes

Available rotor adapters: A02P2,A05P2



### AS18-5 (round bottom)

Cat. No.19400073

#### for D3024 & D1524R

Max. speed :15000rpm

Max. RCF:21380 × g

Rotor capacity:5mL × 18 ( Round bottom)

Rotor material:Aluminum alloy

Bio-safe(Bio sealing):Yes



### AS12-5V (cone bottom)

Cat. No.19400070

#### for D3024 & D1524R

Max. speed: 15000rpm

Max. RCF: 21380 × g

Rotor capacity: 5mL × 12(Cone bottom)

Rotor material: Aluminum alloy

Bio-safe(Bio sealing): Yes



## Available adapters

### A02P2

Cat. No.19500001

0.2mL rotor adapter

Used with A12-2, A12-2P, AS24-2 and A24-2P rotors 24pcs/pk



### AS36-05

Cat. No.19400071

#### for D3024 & D1524R

Max. speed: 15000rpm

Max. RCF: 21380 × g

Rotor capacity: 0.5mL × 36,0.2mL × 36

Rotor material: Aluminum alloy

Bio-safe(Bio sealing): Yes

Available rotor adapters: A02P05



### A05P2

Cat. No.19500002

0.5mL rotor adapter

Used with A12-2, A12-2P, AS24-2 and A24-2P rotors 24pcs/pk



### AS4-PCR8

Cat. No.19400072

#### for D3024 & D1524R

Max. speed: 15000rpm

Max. RCF: 21380 × g

Rotor capacity:0.2mL/PCR8 × 4

Rotor material: Aluminum alloy

Bio-safe(Bio sealing): Yes



### A02P05

Cat. No.19500003

0.2mL rotor adapter

Used with AS36-05 rotor 36pcs/pk

