



IT CAN'T GET  
BETTER THAN THIS

iSwix VT  
Digital Vortex Mixer

## iSwix VT

Digital Vortex Mixer

Vortex Mixers play a crucial part in any laboratory setup hence the need for reliable performance and durability, but most mixers have issues with lackluster performance owing to sub-par quality components and raw-materials used. Hence, these devices leave a lot to be desired and end-up being a waste of space and investment.

Developed after years of R&D, Neuation's best-in-class iSwix VT vortex mixer provides the best of performance due to its top-of-the-line internal components such as long lasting maintenance free BLDC motor. With class-leading features like inbuilt counter balance and 3-way switch, the device makes working even easier.



## Product Features



Non Corrosive  
Body Design



Adjustable speed setting  
from 300 to 4200 RPM



Orbital diameter  
of 4 mm

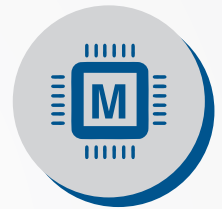


Digital Display shows the  
speed and time toggles  
after every 5 seconds



Brushless DC motor for  
quiet performance and  
a maintenance-free long life

Microprocessor based  
closed loop control for  
efficient performance even  
under high loads



Variable timer setting  
from 1 to 999 minutes and  
continuous mode



Pulse Mode function  
with Run-Pause-Run  
function for thorough  
mixing of solution



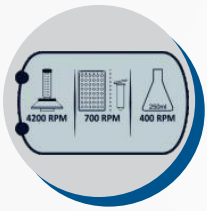
3-way switch for Touch,  
Continuous & Stand-by mode  
for unmatched convenience



## Product Features



Inbuilt counter balance ensures stable operation for complete peace-of-mind



Visual indication marker for max speed with attachments



Small footprint saves valuable bench space and can also be used inside hoods and cold rooms

IP 42 Provides An Assurance Of Durability And Quality.



Safe Low Voltage Device



## Standard Attachments



Round Disc

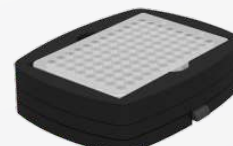


Cup Attachment

## Optional Attachments



Micro Centrifuge Tube  
20 x 1.5/2ml



96 Well Micro Plate



Flask





# Specifications

| iSwix VT                            |  |
|-------------------------------------|--|
| Max Speed                           | 4200 RPM   |
| Orbital diameter                    | 4 mm   |
| Motor type                          | Brushless DC   |
| Digital Display                     | Yes  |
| Dimensions (W X D X H)              | 205 x 136 x 138.5 mm   |
| Speed Setting                       | 300-4200 RPM   |
| Timer Setting                       | 0-999 mins (min/sec display)   |
| Pulse mode                          | Yes, Programmable Pulse  |
| Max Load Capacity                   | 500 gm   |
| Weight                              | 2.8 kg   |
| Optional Attachments (not included) | Universal platform for attaching either - microplate / microtube / flask Attachments |

# Ordering Information

| iSwix VT     |                     |                       |
|--------------|---------------------|-----------------------|
| Product Name | Cat #               | Details               |
| iSwix VT     | VM-2110 EU/US/UK/AU | Digital Vortex Mixer  |
| Attachment   | VM-A6               | Round Disc Attachment |

## Accessories

|   |  |  |   |
|---|--|--|---|
|  <p><b>Microplate</b><br/>CAT. NO. # VM-A3</p> |  <p><b>Flask</b><br/>CAT. NO. # VM-A4</p> |  <p><b>Micro Centrifuge Tubes</b><br/>CAT. NO. # VM-A2</p> |  <p><b>Cup Attachment</b><br/>CAT. NO. # VM-A1</p> |
|---|--|--|---|

**NEUATION**  
TECHNOLOGIES  
www.neuation.com

AN ISO 9001 : 2015 & ISO 13485 : 2016 CERTIFIED MFG. COMPANY

\*We also execute OEM projects. Specifications can be changed without notice for quality improvement.