



## TECHNICAL SPECIFICATIONS

### METHOD

Reflectance photometry

### THROUGHPUT

Up to 400 tests/h

### PARAMETERS

specific gravity, leucocytes, nitrite, pH, protein, glucose, ketones, urobilinogen, bilirubin, blood, microalbumin, creatinine (incl. ALB/CRE)

### MEMORY

1000 results

### SAMPLE IDENTIFICATION

Manual entry, barcode reader, worklist

### USER INTERFACE

color touch screen (800 x 400 pixels)

### PRINTER

built-in thermal printer

### INTERFACE

RS232 serial port, Ethernet, PS2, 2x USB

### DIMENSIONS

300 x 287 x 148 mm  
3.2 kg

### WORKING CONDITIONS

15 °C – 35 °C  
20 % to 80 % relative humidity  
100 V to 240 V / 50 – 60 Hz  
7.5 V; 5.34 A



CAT. NUMBER	PRODUCT NAME	QTY
INS00063	LAURA	1 pcs
<b>Diagnostic strips</b>		
URPH0028	DEKAPHAN LAURA	100 strips
URPH0027	HEPTAPHAN LAURA	100 strips
URPH0026	PETNAPHAN LAURA	100 strips
URPH0025	TETRAPHAN LAURA SG	100 strips
URPH0024	DIAPHAN LAURA	100 strips
URPH0029	MICROALBUPHAN LAURA	50 strips
<b>Urine Controls</b>		
REG00053	URINORM	2 x 3 bottles
<b>Grey Control Strips</b>		
URPH1002	Control strips for LAURA ver. 2	1 x 3 pcs



**Erba Lachema s.r.o.**  
Karásek 2219/1d, 621 00 Brno, Czech Republic  
Phone: +420 517 077 111  
E-mail: sales@erbamannheim.com  
www.erbamannheim.com

TOTAL SOLUTIONS FOR CLINICAL DIAGNOSTICS

Version No 1.0

# LAURA

SEMI AUTOMATED  
URINE STRIP ANALYSER

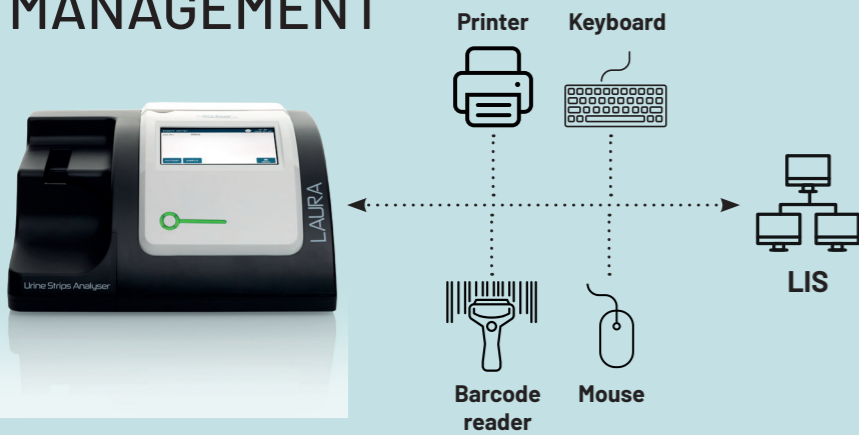
# POWERFUL

## DIP AND MEASURE



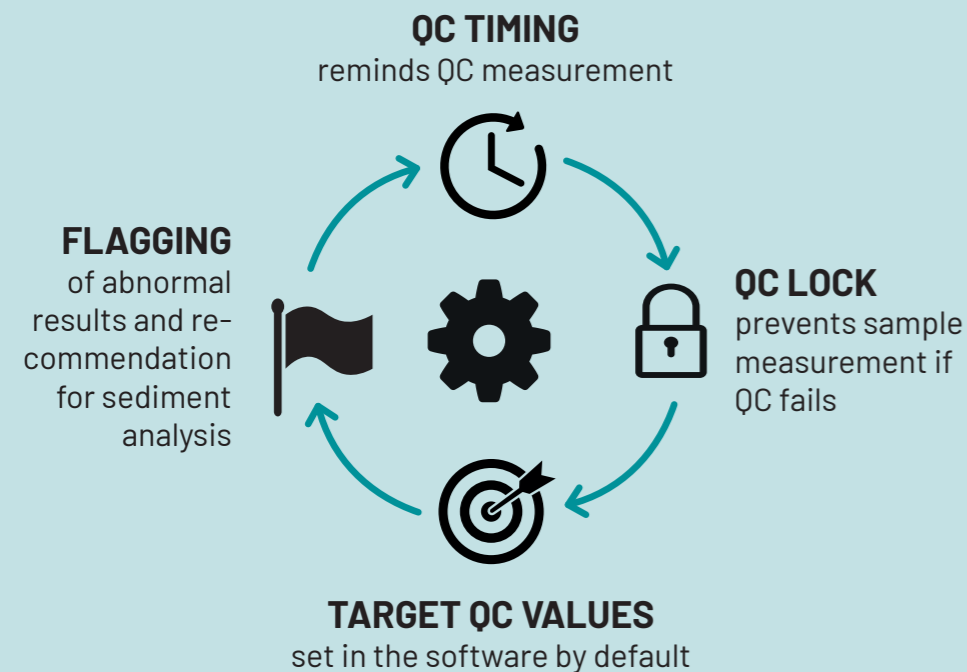
Automatic incubation, measurement, and evaluation reduces manual labour requirements and minimizes potential human errors.

# COMPREHENSIVE DATA MANAGEMENT



# ACCURATE

## ADVANCED QC MANAGEMENT



# END-TO-END SOLUTION

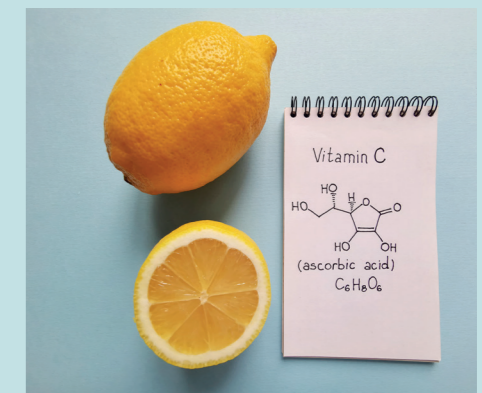
## STRIP TYPE FLEXIBILITY

	SG	LEU	NIT	pH	PRO	GLU	KET	UBG	BIL	BLD	MA	CRE	CP
DEKAPHAN LAURA	.	.	.	.	.	.	.	.	.	.	.	.	.
HEPTAPHAN LAURA				.	.	.	.	.	.	.			.
PETNAPHAN LAURA				.	.	.	.			.			.
TETRAPHAN LAURA SG	.			.	.	.							.
DIAPHAN LAURA					.	.							.
MICROALBUPHAN LAURA*											.	.	.

Strip type is recognized automatically by the reader, no manual entry required.

# PROVEN TECHNOLOGY

PHAN strips technology uses an enzymatic degradation of ascorbic acid which act as strong interfering agent.



# COMPLETE SOLUTION

The LAURA reader with PHAN diagnostic strips and URINORM urine controls provide a complete solution to optimize laboratory workflow.

