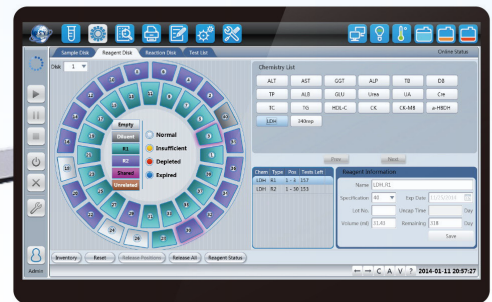


CDT240

AUTO CHEMISTRY ANALYZER



C LINICAL CHEMISTRY
D RUGS OF ABUSE
T HERAPEUTIC DRUG MONITORING



DiaSystem

Clinical Chemistry – our passion

CDT240

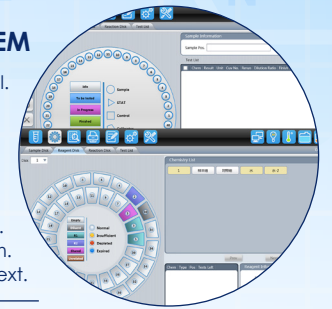
AUTO CHEMISTRY ANALYZER

GENERAL FEATURES

- Fully automated random access.
- Up to 240 T/H (Without ISE).
- Wash and non-wash system both available.
- 81 special plastic cuvettes, quartz optional.
- 24 hours cooling system.
- 40 reagent positions and 40 sample positions.
- Full-sealed matrix spectrometric system.
- User friendly software.
- Touch screen display as optional.

DISPLAY SYSTEM

- Touch screen display as optional.
- User-friendly software.
- Multi-language available.
- Easy operate with iconic interface.
- Easy reagent parameters setting.
- Support batch request.
- Panel/calculation test.
- Powerful statistic system.
- Easy rerun and restore text.



WASHING STATION

- Wash and non-wash system both available.
- 6-step auto washing station.
- Washes cuvettes with wash solution.
- Automatic probe and mixer washing.
- Intelligent anti-contamination program.



REACTION SYSTEM

- 81 high light transmittance reaction cuvettes.
- Semi-permanent plastic cuvette.
- Optional quartz cuvette.
- Constant solid heating.
- Reaction temperature: $37 \pm 0.1^\circ\text{C}$.
- Reaction volume 150-500ul.
- Full-sealed matrix spectrometric system.



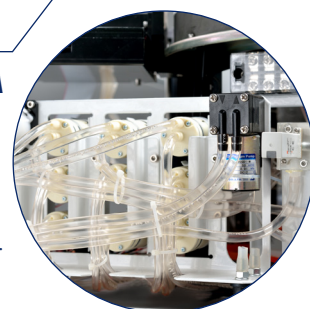
MIXER SYSTEM

- High polished nano material mixer.



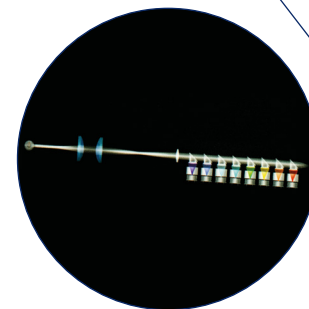
FLUID SYSTEM

- Simplified liquid system.
- Branded components ensure high quality.
- Separated outflow for concentrated waste.
- Easy maintenance.
- Low water consumption: $>5\text{L}/\text{H}$.
- Built-in degasser ensure precise sampling.



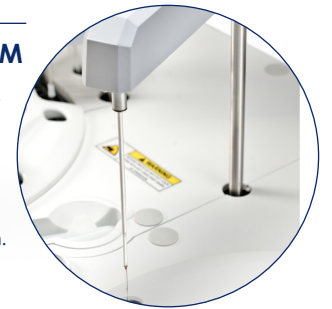
OPTICAL SYSTEM

- Auto adjustment for gain.
- Rear spectrophotometry by filter.
- Halogen-tungsten lamp with >2000 hours lifespan.
- 8 wavelengths from 340-670nm, precision $\pm 2\text{nm}$.
- Simultaneously dual wavelength detection.
- Silent water cooling design avoid heat interference.



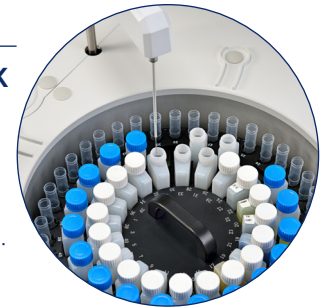
SAMPLING SYSTEM

- High polished nano material sample/reagent probe.
- Liquid level detection, collision protection.
- Auto-depth adjustment.
- High accuracy ceramic syringe.
- Maintenance free rotor with stable movement.
- Built-in degasser ensured precise sampling.
- Washed by alkaline wash solution.



SAMPLE / REAGENT DISK

- Locker design for sample/reagent disk rotation.
- 24 hours reagent refrigerator: $4-12^\circ\text{C}$.
- 40 positions for reagent.
- 40 positions for sample with STAT priority.
- Noise free water cooling design.
- Optional barcode scanner available.



SYSTEM FUNCTION

General:	Automatic, Discrete, Random Access STAT sample priority
Throughput:	Up to 240 tests/hour (without ISE) Colorimetric, Turbidimetry
Principles:	End-point, Fixed-time, Kinetic
Methodology:	Linear/non-linear multi-point calibration

REAGENT/SAMPLE HANDLING

Reagent/Sample:	40 reagent positions, 40 sample positions in cooling compartment (4~12°C)
Reagent volume:	R1: 150~450ul, step by 1 ul R2: 10~300ul, step by 1 ul
Sample volume:	2~50ul, step by 0.1 ul
Reagent/Sample probe:	Liquid level detection and tracking, vertical and horizontal collision protection and inventory checking
Probe cleaning:	Automatic washing of interior and exterior Carry-over > 0.1%
Automatic dilution:	Pre-dilution and post-dilution Dilution ratio up to 1:200

OPTICAL SYSTEM

Light source:	Halogen-tungsten lamp
Photometer:	Free maintenance sealed photometer, rear spectrophotometry by filter
Wavelength:	8 wavelengths: 340nm, 405nm, 450nm 510 nm, 546nm, 578nm, 630nm, 670nm
Absorption range:	0~3.5Abs (10mm conversion)

REACTION SYSTEM

Cuvette:	Rotating tray, containing 81 cuvettes, Semi-permanent plastic cuvette, quartz cuvettes optional, disposable cuvettes optional
Reaction volume:	150~500ul
Reaction temperature:	37°C ± 0.1°C
Mixing system:	Standalone mixing bar
Cuvette washing:	6-step wash station

CONTROL AND CALIBRATION

Calibration mode:	Linear, Logit-Log 4P, Logit-Log 5P, Spline, Exponential, Polynomial
Control software:	Westgard multi-rule, Cumulative sum check, Twin plot, L-J Chart
Operation system:	Windows 7 / Windows 8
Interface:	RS-232
Power supply:	AC 100~240V, 50/60Hz, 350VA
Temperature:	10-30°C
Humidity:	30-85% RH
Dimensions (without display):	855mm (W) x 550mm (D) x 580mm (H)
Weight:	75 kg

DIASYSTEM SCANDINAVIA AB

Datorgatan 3, SE-561 33 Huskvarna, Sweden

Tel: +46 (0) 36 12 62 20

Fax: +46 (0) 36 18 77 30

Email: info@diasystem.se