

Pchem 2

Fully Automated Clinical Chemistry Analyser & Reagents
Double Arm - Up to 420 tests / hour with ISE module on board



The Pchem 2 a reliable fully automated analyser for clinical chemistry operating in the test range of 240-420 tph.

Pchem 2 provides a very reliable performance in the stressed workload segment of 200-300 tests/hr.

The Pchem 2 provides you a maximum efficiency in your routine work in the laboratory. Adaltis offers a complete CE-marked Pchem reagent panel (mono or bi-reagent) ready for use: 28 clinical chemistry assays and 28 turbidimetric assays, including controls and calibrators.

Pchem 2 analyser is versatile and can operate effortlessly in several demanding settings like routine laboratories, POL, for dedicated analysis, as back up instrument as well as in R&D settings.

The Pchem 2 analyser software structure and graphical interface - providing you a significant shorter learning curve in trainings and operation of the analyser. All reagent applications and essential parameters are pre-loaded on the analyser, ensuring you an easy and fast forward daily routine.

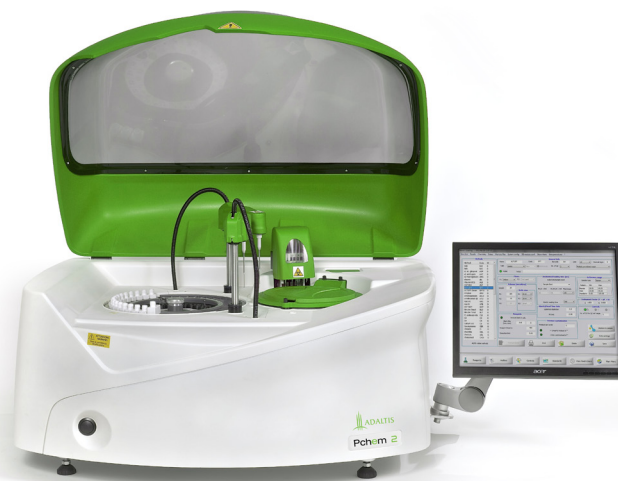


Genuine random
access analyser
& dedicated
reagents

 ADALTIS
RELIABILITY & INNOVATION

Pchem 2

Fully-automated Clinical Chemistry Analyser
up to 420 tests / hour



Features & Specifications

- Analytical methods: end point mono or bichromatic, fixed time, kinetic, differential sample blank.
- ISE module for: Na⁺, K⁺, Li⁺, Cl⁻ in serum, plasma and diluted urine (optional).
- 30/43 reagents on board plus diluent.
- Mono, double reagents method.
- Reaction temperature: +37°C ± 0.1°C.
- 49 sample/ calibrator/control positions on primary tubes (Ø 12÷13mm/75/100mm).
- Automatic dilution of the samples.
- Calibration with linear / nonlinear curves up to 8 points, auto dilution of the calibration curve. (linear regression, linear piece-wise, cubic spline, polynomial).
- Control menu with Levy-Jennings plot.
- Bar-code reader integrated for samples and reagents (optional).
- Arm equipped with liquid level detector (capacitive) and shock sensor.
- Single or double high precision micro-metering pumps for dispensing reagents and samples (no syringe).
- Reagent volume: 1÷400 microliters.
- Sample volume: 1÷300 microliters.
- Typical reaction volume: 200/250 microliters.
- Wavelengths on board: 8 from 340nm to 700nm plus one free position.
- Light source: Long life halogen lamp (2000 hr.)
- Photometric linearity: 0÷3.0 OD.
- Reading cuvette: 80 on board re-washable made in Bionex®.
- Cuvette washing: automatic washing station.
- Water consumption: 3.5 L/hr.
- Reagent cooler: 14°C below ambient temp.
- All in one touch screen computer.
- L.I.S.: Bi-directional connection.
- Operative system: MS Windows®.
- Environment temperature 18-32°C.
- Dimensions: 93x72x60 cm / Weight: 80 kg.



Pchem 2 - Fully Automated Clinical Chemistry Analyser

Double Arm

- Up to 420 tests per hour with ISE module on board.
- **240 Bi-reagent photometric tests / hour constant throughput.**

Single Arm

- Up to 360 tests per hour with ISE module on board.
- Up to 200 mono reagent tests / hour.



Technical Specifications

Code	PCH02-1 (Single Arm) PCH02-2 (Double Arm)
ISE module for PCHEM 2	AD-P3140000179 (Electrodes are not included)
System	random access, batch, STAT
Throughput	200/240 tests/hour (up to 360/420 tests hr with integrated ISE module, on request)
Number of arms	1/2
Number of reagents positions	30/43 parameters on line plus diluent
Number of samples / calibrators / controls	49
Analytical methods	end point, fixed time, kinetic, differential, diff. sample blank, bichromatic
ISE Module	yes, Na+, K+, Li+, Cl- (optional)
Diluter	1/2 micro-metering pumps
Reagent volume	1 ÷ 400 µl
Sample volume	1 ÷ 300 µl
Typical reading volume	200/250 µl
Calibration curves	linear regression, piecewise, cubic spline, polynomial
Automatic dilution	automatic / on request
Reading cuvettes	80 automatic re-washable
Reaction temperature	+37°C ± 0.1°C

Wavelengths	8 from 340 to 700 nm
Light source	long life halogen lamp (2000 hours life)
Photometric linearity	0 ÷ 3.0 OD
Cuvette washing	automatic washing station
Water consumption	3/5 liters / hour
Reagent cooler	up to 14 °C below ambient temperature
Bar-code	yes (optional)
Real-time electronics	modular, SMD
Power supply	100 ÷ 240 Vac
Personal Computer	external, all in one (Touch screen, PC)
Peripherals	CD-ROM, HD > 40 GByte
Printer	external laser
Operational system	MS Windows®
Interface to LIS host	Ethernet
Environment temperature	18 ÷ 32°C
Environment RH	30 ÷ 70 %
Dimensions (WxDxH)	93x72x60 cm
Weight	about 80 kg



Pchem 2 software makes your life easier in the lab

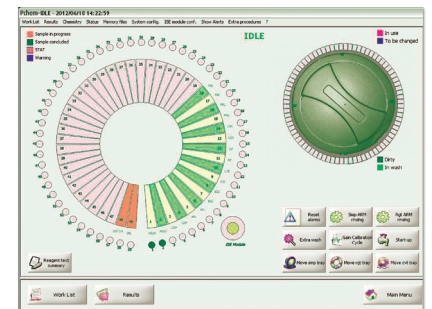
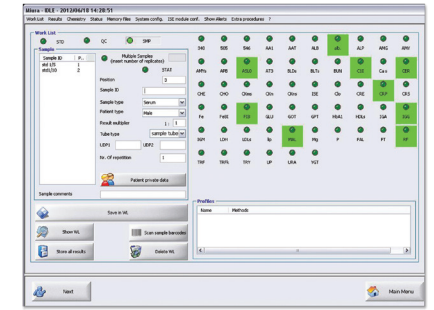
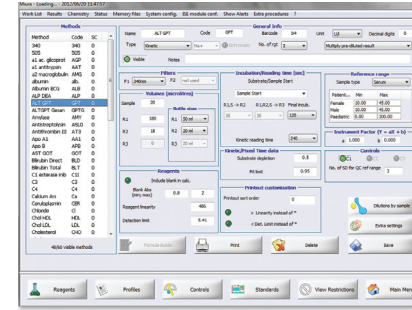
The Pchem 2 is a high end benchtop. Pchem 2 is an advanced clinical chemistry fully automated analyser. The complete range of Pchem Reagents is validated on Pchem2 for a perfect fit and performance. Your hassle free test routine is here!

The Pchem 2 instrument dedicated software and graphical interface - providing you a significant shorter learning curve in trainings and operation of the Pchem instrument and reagents.

Pchem 2 software is based on MS Windows® operating system.

A user friendly interface assists the operator and simplifies the daily routine work:

- Real time check of liquid levels.
- Real time check of patient results.
- QC with Levy-Jennings plot on three levels.
- Graphic presentation of work session.
- Positive identification of reagents gives the end user the assurance to work without compromises on quality.



Pchem Reagents

- The Pchem family simplifies your routine work. Adaltis offers a complete CE marked reagent panel (mono or bi-reagent) ready for use.
- Twenty-eight parameters for enzymes and substrates, with application on serum, plasma and urine, based on the most advanced research in clinical chemistry following international recommendations (IFCC).
- Twenty-eight parameters for specific protein, with application on serum, plasma and urine, standardized with 5 point calibration curve. The Pchem family gives you the possibility to create special methods.
- Pchem reagents are CE-IVD marked and produced under ISO 9001-13485 certification.

CLINICAL CHEMISTRY REAGENT KITS

ADA-R010000001	ALBUMIN BCG
ADA-R0200001001	ALT / GPT SL
ADA-R0200000001	ALP (DEA) SL
ADA-R0000000001	AMYLASE
ADA-R0200001101	AST / GOT SL
ADA-R0200000200	LIPASE
ADA-R0100000201	BILIRUBIN DIRECT
ADA-R0100000101	BILIRUBIN TOTAL
ADA-R0100000301	CALCIUM ARSENAZO
ADA-R0100000501	CHOLESTEROL PAP
ADA-R0200000400	CHOLINESTERASE
ADA-R0100000401	CHLORIDE
ADA-R0200000301	CK NAC SL
ADA-R0200000401	CK MB SL
ADA-R0200000501	CREATININE
ADA-R0200000601	GAMMA GT SL
ADA-R0100000601	GLUCOSE PAP
ADA-R0200001301	HDL CHOLESTEROL
ADA-R0200001401	LDL CHOLESTEROL
ADA-R0200001201	LDH-P SL
ADA-R0200000500	IRON FERENE
ADA-R0200000600	IRON TIBC
ADA-R0200000801	MAGNESIUM
ADA-R0100000701	PHOSPHOROUS UV
ADA-R0100000801	TOTAL PROTEIN
ADA-R0100000901	TRIGLYCERIDES
ADA-R0200000901	UREA UV SL
ADA-R0100001001	URIC ACID

TURBIDIMETRY REAGENT KITS

ADA-R0200000900	HBA1C
AD-3140000042	HbA1c HEMOLYZING SOLUTION
ADA-R1100000101	ALBUMIN
ADA-R1100001401	ALFA-1 - ACID GLYCOPROTEIN
ADA-R1100001301	ALFA-1 - ANTITRYPSIN
ADA-R1100002201	ALFA-2 MACROGLOBULIN
ADA-R1100002501	ANTITHROMBIN III
ADA-R1100000201	APOLIPO PROTEIN A1
ADA-R1100000301	APOLIPO PROTEIN B
ADA-R1100001901	C1 ESTERASE INHIBITOR
ADA-R1100002001	CERULOPLASMIN
ADA-R1100002601	COMPLEMENT C3
ADA-R1100003201	COMPLEMENT C4
ADA-R1100004001	CRP
ADA-R1100003301	FIBRINOGEN
ADA-R1100000601	HAPTOGLOBIN
ADA-R1100003401	IgA
ADA-R1100003501	IgG
ADA-R1100003601	IgM
ADA-R1100003701	KAPPA LIGHT CHAIN
ADA-R1100003801	LAMBDA LIGHT CHAIN
ADA-R1100002901	LIPOPROTEIN (A)
ADA-R1100003901	MICROALBUMIN
ADA-R1100003001	PREALBUMIN
ADA-R1100004201	TRANSFERRIN

LATEX REAGENT KITS

ADA-R1100004401	ANTI-STREPTOLYSIN (O)
ADA-R1100001801	BETA 2 - MICROGLOBULIN
ADA-R1100004301	FERRITIN
ADA-R1100004101	RHEUMATOID FACTOR





GENERIC CALIBRATORS & CONTROLS

AD-R0300000006	MULTICALIBRATOR
AD-R0400000006	NORMAL CONTROL SERUM
AD-R0400000106	PATHOLOGICAL CONTROL SERUM
AD-R0300000009	HDL / LDL CALIBRATOR
AD-R0300000100	CKMB CALIBRATOR
AD-R0400000300	HDL / LDL CONTROL
AD-R0400000400	CKMB CONTROL

PCHEM SYSTEM SOLUTIONS

ADP3140000102	SYSTEMIC SOLUTION
ADP3140000282	MULTICLEAN SOLUTION
ADP3140000113	RINSE SOLUTION (EW CVT)
ADP3140000115	RINSE SOLUTION (EW PRB)

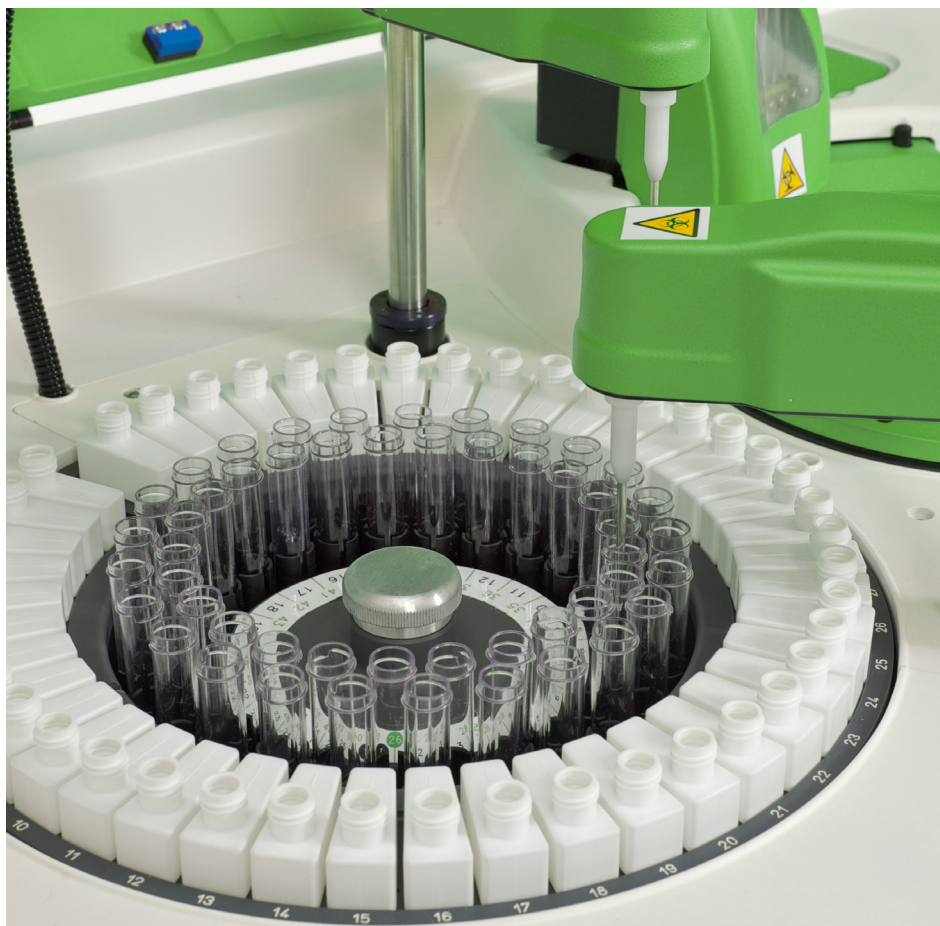
ISE MODULE - ISE MODULE CONSUMABLE

AD-S3141000284	NA ELECTRODE FOR ISE MODULE
AD-S3141000285	K ELECTRODE FOR ISE MODULE
AD-S3141000286	CL ELECTRODE FOR ISE MODULE
AD-S3141000287	LI ELECTRODE FOR ISE MODULE
AD-S3141000288	REFERENCE ELECTRODE
AD-S3141000290	REAGENT PACK (CAL A, CAL B, WASTE)
AD-S3141000351	URINE DILUENT - 125 ML
AD-S3141000292	CLEANING SOLUTION - 90 ML
AD-S3141000294	ISE MODULE FLUID TUBING KIT
AD-S3141000289	ISE MODULE SPACER ELECTRODE
AD-S3141000295	ISE MODULE TUBING ADAPTER

CALIBRATORS AND CONTROLS

AD-R1300001101	ASL(O) STANDARD HIGH
AD-R1300001301	CRP STANDARD HIGH
AD-R1300001901	RF STANDARD HIGH
AD-R1300002501	PROTEIN STANDARD HIGH
AD-R1300001501	APO A1/B STANDARD HIGH
AD-R1300002001	MICROALBUMIN STANDARD KIT
AD-R1300002201	FIBRINOGEN STANDARD
AD-R1300002901	FERRITIN STANDARD KIT
AD-R1300001701	LIPOPROTEIN (A) STANDARD HIGH
AD-R1300002601	BETA 2 MICROGLOBULIN STANDARD KIT
AD-R1400000401	APO A1/B CONTROL
AD-R1400000801	MICROALBUMIN CONTROL
AD-R1400001701	FIBRINOGEN CONTROL
AD-R1400001301	FERRITIN CONTROL LOW
AD-R1400001501	FERRITIN CONTROL HIGH
AD-R1400000501	LIPOPROTEIN (A) CONTROL LOW
AD-R1400000601	LIPOPROTEIN (A) CONTROL HIGH
AD-R1400000301	BETA 2 MICROGLOBULIN CONTROL LOW
AD-R1400001601	BETA 2 MICROGLOBULIN CONTROL HIGH
AD-R1400000901	IMMONOLOGY CONTROL LOW
AD-R1400001001	IMMUNOLOGY CONTROL HIGH
AD-R0300000000	HBA1C CALIBRATOR
AD-R0400000500	HBA1C LOW CONTROL
AD-R0400000200	HBA1C HIGH CONTROL





For more information

WWW.ADALTIS.NET

Customer Care Center:
e-mail: info@adaltis.net

Technical Assistance:
e-mail: pchem.service@adaltis.net

Legal Registered Office
Via Durini, 27
20122 Milano, Italy

Tel: + 39 0774 5791
Fax: + 39 0774 353085

Sales and Marketing Office
e-mail: sales@adaltis.net

Order handling and Logistics
e-mail: order@adaltis.net

Adaltis S.r.l. Headquarter
Production and
Development Plant

Via Luigi Einaudi 7
Guidonia di Montecelio
00012 Rome, Italy

ADALTIS is certified in compliance with ISO9001 and ISO 13485.
Our products are CE-IVD.