

# DF50

## Auto Hematology Analyzer

### Technical Specification

#### Principles

Impedance method for RBC and PLT counting  
Cyanide free reagent for hemoglobin test  
Flow Cytometry (FCM) + Tri-angle laser scatter method for WBC 5-part differential analysis and WBC counting

#### Parameters

27 parameters: WBC, Lym%, Mon%, Neu%, Bas%, Eos%, Lym#, Mon#, Neu#, Eos#, Bas#, RBC, HGB, HCT, MCV, MCH, MCHC, RDW-CV, RDW-SD, PLT, MPV, PDW, PCT, LIC%, LIC#, ALY%, ALY#  
3 histograms for WBC, RBC and PLT  
3 DIFF scattergrams and 1 BASO scattergram

#### Reagent

DIL-C Diluent, LYC-1 LYSE, LYC-2 LYSE, Probe Cleanser

#### Performance

Parameter Linearity Range Precision Carryover  
WBC  $0-300 \times 10^9/L$   $\pm 2\%$  ( $4-15 \times 10^9/L$ )  $\pm 0.5\%$   
RBC  $0-8.5 \times 10^{12}/L$   $\pm 1.5\%$  ( $3.5-6.0 \times 10^{12}/L$ )  $\pm 0.5\%$   
HGB  $0-250g/L$   $\pm 1.5\%$  ( $110-180g/L$ )  $\pm 0.5\%$   
PLT  $0-3000 \times 10^9/L$   $\pm 4.0\%$  ( $100-500 \times 10^9/L$ )  $\pm 1.0\%$

#### Sample Volume

Prediluted blood  $20\mu L$ , Whole blood  $15\mu L$

#### Throughput

60 samples per hour

#### Display

10.4 inch TFT Touch Screen

#### Multi-language

Chinese, English available  
Spanish, Portuguese, Russia, French under planning

#### Data Storage Capacity

Up to 50,000 results including numeric and graphical

#### Communication

LAN port supports HL7 protocol

#### Interface

4 USB Ports, 1 LAN port

#### Printout

External Laser printer / Inkjet printer, various printout formats and user-defined formats

#### Operating Environment

Temperature:  $10^{\circ}C \sim 30^{\circ}C$   
Humidity:  $20\% \sim 85\%$

#### Air pressure

$70 kPa \sim 106 kPa$

#### Power requirement

$100V-240V \sim$ ; 50/60Hz

#### Dimension

$360mm(L) \times 470mm(W) \times 430mm(H)$

#### Weight

28KG

SMART 5-PART



# DF50

## Auto Hematology Analyzer



SHENZHEN DYMIND BIOTECHNOLOGY CO.,LTD.

Address: 2/F, Nanfeng Building B, Nanshan Yungu Innovation Industrial Park, No.1183, Liuxian Blvd, Taoyuan Street, Nanshan District, Shenzhen 518055, P.R.China

Tel: +86-755-26008015

E-mail: intl@dymind.com.cn

Fax: +86-755-26746162

Website: www.dymind.com.cn



DYMIND

www.dymind.com.cn


# DF50

## Auto Hematology Analyzer

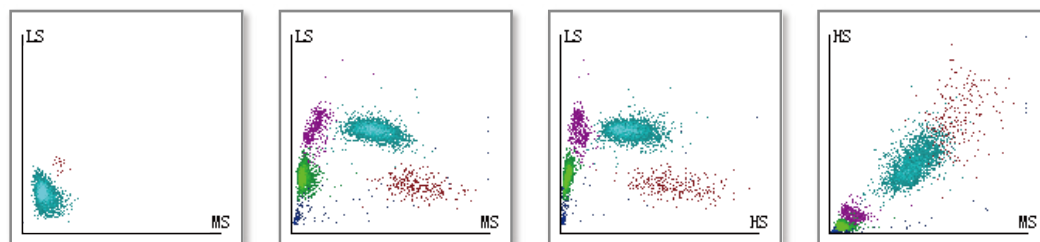



### Features

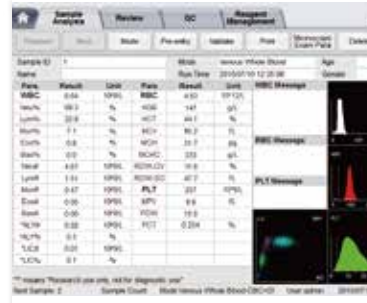
- Tri-angle Laser scatter + Flow cytometry technology
- WBC 5-part differentiation, 23 reportable parameters and 4 research parameters, 3 histograms, 3 DIFF scattergrams and 1 BASO scattergram
- Double optical counting channel both for WBC and basophil measurement
- Whole blood mode, Capillary whole blood mode and Prediluted mode
- Powerful capability of flagging abnormal cells
- 10.4 inch large TFT touch screen with user-friendly software
- Large storage capacity: up to 50,000 samples
- Throughput: 60 samples per hour
- Low sample volume 15 $\mu$ L
- Compact in size
- High precision
- Good repeatability

**Trace**  **15 $\mu$ L**  
 ultra-low sample volume especially  
 suit for pediatric and geriatric samples

**R**eal double optical channel test, both for Diff and BASO. BASO channel with optical counting, more precise.

**4** USB ports for data transmitting and connection with printer, keyboard, mouse, barcode scanner etc.



**U**ser friendly operation software.



**4** reagent totally, 3 are routine use. Shelf life is 2 years.

**A**ll key components are imported, high quality and longer life. Syringe maintenance free.

- Valve from Japan
- Liquid pump from Germany
- Reliable component
- Long-life syringe
- Needle from Switzerland